



SAINT PATRICK'S
CATHEDRAL *Dublin*

VISITING
CHOIRS

A GUIDE FOR CHOIRS
AND DIRECTORS

WELCOME

We are very grateful to visiting choirs who maintain the worship of the Cathedral when the Cathedral Choir is on holiday. Inevitably every cathedral has slightly different ways of organising its services and I hope that this booklet will give you all the information you need. But in any case please feel free to ask for further help from any of the staff named here. We will be only too glad to help to make your visit to Saint Patrick's as enjoyable as possible.

SERVICES

Evensong is sung at 5.30pm with the exception of Wednesdays and Saturdays which are usually dumb. Sung Services on Sundays take place at 11.15 (Eucharist) and 15.15 (Evensong).

REHEARSAL TIME IN THE CATHEDRAL

CHOIR REHEARSALS the following times are set aside and booked in the diary:

Monday – Friday	16.00-17.15
Sunday	10.00-11.00
	14.00-15.00

The Hewson Room (situated across the close opposite the Cathedral's main entrance) is available as an additional rehearsal space and storage area for robes and belongings during your visit. Keys for this room can be collected from the Cathedral front desk.

ORGAN REHEARSALS

Monday – Friday	08.30-09.30
	18.15-19.30
Saturday	17.00-18.30

NB These times are subject to availability in the diary. Please book all practice time with the Cathedral Office well in advance by emailing tours@stpatrickscathedral.ie

Organ practice during the day is not possible.

STAFF AT THE CATHEDRAL

Organist and Master of the Music Stuart Nicholson	Email: organist@stpatrickscathedral.ie Telephone: +353 87 414 3811
Dean's Vicar Canon Charles Mullen	Email: deans.vicar@stpatrickscathedral.ie Telephone: +353 1 453 9472
Head Verger/Cathedral Manager Louis Parminter	Email: louis.parminter@stpatrickscathedral.ie Telephone: +353 83 1977917 or +353 1 453 6764
Cathedral Office/Diary Bookings Susan Barrett	Email: tours@stpatrickscathedral.ie Telephone: +353 1 453 9472

SERVICES AT SAINT PATRICK'S

MUSICAL REQUIREMENTS FOR SERVICES

SUNDAYS

Sung Eucharist 11.15

- Musical setting of Kyrie, Gloria, Sanctus, Benedictus and Agnus Dei.
- Gradual psalm* (sung without Gloria) or short anthem
- Communion Motet
- 3 hymns* (Opening, Offertory & Final)

Evensong 15.15

- Musical setting of responses, Canticles (Magnificat and Nunc Dimittis) and anthem.
- Psalm* & 2 hymns* (Opening & Offertory)

WEEKDAYS

Evensong 17.30

- Musical setting of responses, Canticles (Magnificat and Nunc Dimittis) and an anthem.
- Psalm*

*The Psalms and Hymns will be sent through to you well in advance of your visit.

SERVICE RUNNING ORDERS

Weekday Evensong 17.30

- Assemble the Procession at the West End of the Cathedral at 17.27.
- Service begins with **Vestry Prayer** intoned by Dean's Vicar, choir responds unison Amen.
- Short organ improvisation as the procession moves into stalls from near (west) end. Choir remains facing east until all are in the Chancel, all bow, and then turn in.
- Opening **Responses** (organist may need to give cantor note)
- **Psalm** (announced)
- Sit for *First Lesson*
- Stand for **Magnificat**
- Sit for *Second Lesson*
- Stand for **Nunc Dimittis**
- Remain standing and face east for the *Creed* (choir join from 'The Father Almighty')
- Turn in for the second set of **Responses**.
- **Anthem** (announced)
- Kneel for the *Prayers* (ending with the Grace).
- **Organ Voluntary**. This is cue to stand, turn east and bow with the clergy, then process out of the east end of the stalls and back down the central aisle.
- When you can go no further turn to face east and await the clergy.
- Said *dismissal*.
(The Lord be with you; **And with thy spirit**. Let us bless the Lord **Thanks be to God**.)

Sunday Eucharist 11.15

- Line up at the West End of the Cathedral at 11.12 am.
- Follow the crucifer out to form the procession.
- Service begins with **Vestry Prayer** intoned by Dean's Vicar, choir responds unison *Amen*.
- Short organ improvisation as the procession moves into stalls from near (west) end. Choir remains facing east until all are in the Chancel, all bow, and then turn in.
- **First hymn** (*unannounced*), play over begins when choir faces inward.
- Remain standing for the *Greeting* and *Prayer for Purity*.
- **Kyrie.**
- *Prayers of Penitence.*
- **Gloria.**
- The President **may** sing the *Collect for the Day* – in which case the choir respond with unison **Amen**.
- Sit for *Epistle*.
- Stand, sing **Psalm** (without Gloria) – a short anthem may be sung here instead.
- **Gospel** (*see page 6*)
- Gospel Improvisation: organist should cover Gospel procession to chancel and preacher to pulpit.
- *The Sermon.*
- *Nicene Creed* (facing east).
- Sit or kneel for the *Prayers of the People*.
- Stand for the *Peace* and **Offertory Hymn** (*unannounced*) NB *If necessary Organist to improvise until President faces West.*
- **Sursum Corda** (*see page 7*) may be sung by President & Choir only.
- *Eucharistic prayer* (remain standing) leading to **Sanctus** (and **Benedictus** – omitted if lengthy).
- Remain standing for *Lord's Prayer*
- Following the President's invitation for the congregation to receive communion, the choir sing **Agnus Dei** and **Motet**.
- Once the clergy have returned to the sanctuary and the motet is finished, the choir may go to the High Altar rail to receive communion/blessing.
- *Post communion prayer.*
- Stand for **Final hymn.** (*unannounced*)
- Remain standing for *Blessing & Dismissal* (*see page 7*).
- As soon as **Organ Voluntary** begins the choir turn east, crucifer lines up in front of the altar, the choir then follows them out of the stalls, front row first.
- At the west end stop, turn east, and await the clergy.
- Said *dismissal*.
(The Lord be with you; **And with thy spirit.** Let us bless the Lord; **Thanks be to God.**)

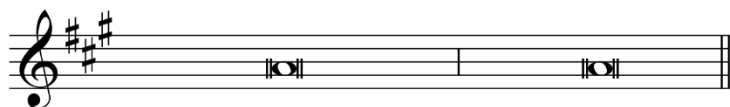
Sunday Evensong 15.15

- Assemble the Procession at the West End of the Cathedral at 15.13, level with the back rows of chairs.
- Short organ improvisation as the procession moves into stalls from near (west) end. Choir remains facing east until all are in the Chancel, all bow, and then turn in.
- **First hymn** (*unannounced*), play over begins when choir faces inward.
- *A word of welcome may follow here*
- Opening **Responses**
- **Psalm** (*unannounced*)
- Sit for *First Lesson*
- When reader has returned to his/her stall choir stands for **Magnificat**
- Sit for *Second Lesson*
- When reader has returned to his/her stall choir stands for **Nunc Dimittis**
- Remain standing and face east for the *Creed*
- Turn in for the second set of **Responses**.
- **Anthem** (*unannounced*)
- Kneel for the *Prayers* (ending with the grace)
- Stand for **Hymn** (*unannounced*)
- Kneel for the *Blessing*.
- **Organ Voluntary**. This is cue to stand, turn east and bow with the clergy, then process out of the east end of the stalls and back down the central aisle.
- When you can go no further turn to face east and await the clergy.
- Said *Dismissal*.
(The Lord be with you; **And with thy spirit**. Let us bless the Lord; **Thanks be to God**.)

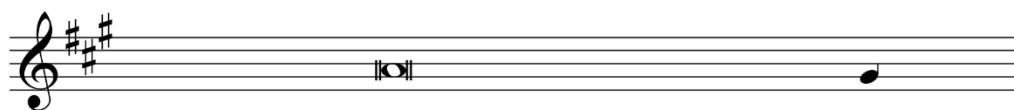
MUSIC FOR THE EUCHARIST

GOSPEL RESPONSES

BEFORE THE GOSPEL



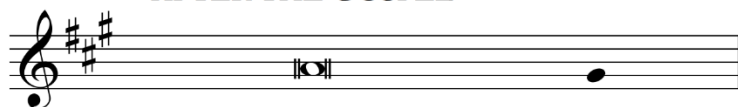
The Lord be with you: **And also with you.**



*Hear the Gospel of our Saviour Christ according to
Saint ?? in the ?? chapter, beginning at the ?? verse.*

A vocal line and piano accompaniment. The vocal line is in G major, 3/4 time, with lyrics: "Glo - ry to you Lord Je - sus Christ." The piano accompaniment consists of two staves (treble and bass clef) with chords and moving lines.

AFTER THE GOSPEL



This is the Gospel of the Lord

A vocal line and piano accompaniment. The vocal line is in G major, 3/4 time, with lyrics: "Praise to you Lord Je - sus Christ." The piano accompaniment consists of two staves (treble and bass clef) with chords and moving lines.

SURSUM CORDA

President	Choir
The_ Lord is___ here. His_ Spi-rit is with us.	
Lift up your_ hearts. We lift them to___ the Lord.	
Let us give thanks to___ the Lord_ our God.	
It is right to give our thanks and praise.___	

DISMISSAL

Go in peace to love and serve the Lord.

In the name of Christ,* A - men.



THE 1902 WILLIS ORGAN

The current instrument was built in 1902 incorporating some of the existing pipework, by Henry Willis and Sons, in a specially constructed chamber in the triforium above the north choir aisle. This was a major undertaking; flying buttresses similar to those on the south side of the choir were partly removed and the chamber was built on to the north side in keeping with the original architecture. Access was provided by a spiral staircase of marble, designed by Sir Thomas Drew. ‘Father’ Willis planned the new organ in consultation with Sir George Martin, organist of Saint Paul’s Cathedral, London, where there is an earlier ‘Father’ Willis instrument. We are privileged to have one of the finest late romantic Cathedral organs in the world, and are grateful to the Dean and Chapter for their ongoing commitment to keep the organ at the peak of health.

PRACTICAL GUIDE FOR VISITING ORGANISTS

NB, all practice should be prebooked well in advance and use of the organ between 9.30am & 4.00pm is not generally permitted.

- The key for the organ loft may be obtained from the front desk.
- Please ensure that the spiral stairway gate is pulled shut behind you.
- On/off switch is situated to the right of the *Solo* manual.
- The switch for the TV monitor is found underneath the bottom right hand corner of the screen – camera controls to the right (twist for zoom).
- Please lock up (switching off all lights) and return key to the front desk even if you are only leaving the building for a short time.
- PISTONS
 - There is a numeric keypad at the bottom of the LH stop jambs.
 - Number 8 is reserved for visiting organists.
 - This will open up 16 Divisional and 96 General settings (under the music desk).
 - **Please do not change any other settings.**
- BALANCE
 - Choral Accompaniment
 - Depends on the size of the choir!
 - Gt 3 & 4 is generally more than enough, use swell reeds with caution (esp 4’ reed)
 - Hymn Accompaniment
 - Use plenty of organ throughout the hymns esp. the Nave division.

THE SPECIFICATION

PEDAL ORGAN

Double Diapason	32
Sub Bourdon*	32
Open Diapason	16
Violone	16
Bourdon	16
Octave	8
Principal (Nave)*	8
Violoncello	8
Bass Flute	8
Fifteenth (Nave)*	8
Super Octave	4
Octave Flute	4
Mixture	III
Contra Posaune	32
Bombarde	16
Clarion	8

CHOIR ORGAN

Bourdon	16
Gamba	8
Claribel	8
Stopped Diapason	8
Dulciana	8
Gemshorn	4
Flauto Traverso	4
Nazard	2 ² / ₃
Fifteenth	2
Piccolo	2
Tierce	1 ³ / ₅
Larigot	1 ¹ / ₃
Mixture	III
Cor Anglais	16
Corno di Bassetto	8
<i>Tremulant</i>	

GREAT ORGAN

Double Diapason	16
Open Diapason No 1	8
Open Diapason No 2	8
Open Diapason No 3	8
Open Diapason No 4	8
Claribel	8
Principal	4
Flûte Harmonique	4
Twelfth	2
Fifteenth	2
Mixture	III
Mixture	III-IV
Trumpet	8
Trombone	16
Trumpet Harmonique	8
Clarion Harmonique	4

SOLO ORGAN

Flute	8
Gamba	8
Voix Celeste	8
Concert Flute	4
Nazard	2 ² / ₃
Piccolo	2
Tierce	1 ³ / ₅
Clarinet	8
Orchestral Oboe	8
Cornopean	8
<i>Tremulant</i>	
Double Tuba	16
Tuba	8
Octave Tuba	4
<i>Octave</i>	
<i>Sub Octave</i>	
<i>Unison Off</i>	

SWELL ORGAN

Double Diapason	16
Open Diapason 1	8
Open Diapason 2	8
Lieblich Gedeckt	8
Salicional	8
Vox Angelica	8
Gemshorn	4
Flageolet	2
Mixture	III
Hautboy	8
Vox Humana	8
Horn	8
<i>Tremulant</i>	
Trombone	16
Cornopean	8
Clarion	4
<i>Octave</i>	
<i>Sub Octave</i>	
<i>Unison Off</i>	

NAVE ORGAN

Open Diapason	8
Stopped Diapason	8
Principal	4
Fifteenth	2
Mixture	III/IV
<i>Nave Sub Octave</i>	

* prepared for

STAYING IN DUBLIN

HOTELS	
Jurys Christchurch Inn Christchurch, Dublin 2	www.jurysinns.com
Harding Hotel Copper Alley, Fishamble St., Dublin 2	www.hardinghotel.ie
Hyatt Centric Dean Street, Dublin, D08 W3X7	www.hyatt.com
Maldron Hotel Kevin Street, Dublin, D08 AX57	www.maldronhotelkevinstreet.com
The Radisson Hotel Golden Lane, Dublin 8	www.radissonblu.ie
OTHER ACCOMMODATION	
Trinity College Dublin 2	www.tcd.ie/summeraccommodation
The CofI Theological Institute Braemor Park, Churchtown, D14 KX24	www.theologicalinstitute.ie/conference-centre-retreat/accommodation
Irish Management Institute Sandyford Road, Dublin 16	www.imi.ie/product/accommodation
USEFUL CONTACTS	
Dublin Tourism	www.visitdublin.com www.dublin.ie/live/things-to-do/attractions
Irish Tourist Board	www.tourismireland.com

EATING & DRINKING IN DUBLIN

SELECTION OF PUBS <i>within 10/15* minutes' walk</i>	
John Fallons opposite the Cathedral	129 The Coombe, Dublin 8. Telephone: + 353 1 4542801 Cathedral Choir local – cosy pub – great atmosphere - can get very busy. Serves toasted sandwiches during the day.
The Bull & Castle www.fxbrestaurants.com	Christchurch, Dublin 8. Telephone: +353 1 475 1122 Excellent food and selection of beers. Pricey but fabulous.
The Lord Edward www.lordedward.ie	23 Christchurch Place, Dublin 8. +353 1 4542158 The joint Cathedral Choirs' local.
The Headline Bar www.57theheadline.com	56/57 Lower Clanbrassil Street, Dublin 8. +353 1 5320279 Great food, lots of craft beers (including many locally brewed within spitting distance.....)
The Porterhouse Pub/Brewery* www.porterhousebrewco.com	16-18 Parliament Street, Dublin 2. Telephone: + 353 1 679 8847 Great food (very “full” Irish Breakfast available at w/ends) lots of unusual beers on offer.
Tenters Gastropub www.tenterspub.ie	1 Mill Street, Blackpitts, Dublin 8. Telephone: + 353 1 963 1787 Generally quieter than many pubs Great food and plenty of space!
HOTELS	
See previous page	
RESTAURANTS <i>of which there are many to suit all tastes/budgets! These are just a few of them.</i>	
Italian	www.cafetopolis.com www.toscanarestaurant.ie www.lacucinarestaurant.ie
Indian	www.diwali.ie www.konkan.ie (the Clanbrassil Street one!)
Thai	www.sabadublin.com/south-william-street www.redtorchginger.ie

GETTING ABOUT IN DUBLIN

COACHES

The Cathedral has a long and very happy relationship with Dualway Coaches (a locally based firm) and they have transported the Cathedral Choir throughout Ireland and abroad. Great rates and a fantastic service – visit their website or contact them to find out exactly what they can offer.

Tel: +353 1 458 0054 E-mail: info@dualway.com Web: www.dualway.com

DUBLIN TRAINS AND RAILWAYS

For getting around Dublin, the DART suburban rail line follows a coastal route, from Malahide and Howth to the north, all the way around the scenic Dublin Bay to Bray and Greystones to the south. Trains are relatively frequent during rush hours, however schedules are often irregular outside of peak hours, so it is advisable to check a timetable before travelling if possible. Tickets can be bought at the station where you begin your journey, from either a vending machine, or at the booking office window, as stations are (usually) manned. The staff at the station will be happy to advise you as to the best ticket options and provide you with any help you require.

Getting to Dublin via Rail from elsewhere in Ireland is easy.

Dublin has two major railway stations to service the rest of Ireland:

HEUSTON STATION

Serves the south-west and west: Cork, Limerick, Galway, Waterford, Kilkenny, Carlow, Westport.

CONNOLLY STATION

Serves the south-east, north, and north-west: Belfast, Sligo, Wexford, Maynooth.

For more information, see www.irishrail.ie

DUBLIN LUAS (TRAM) SERVICES

The Luas: Trams returned to the streets of Dublin in 2004, after the DUTC tram system was dismantled in the mid-20th century. The Luas is a system of two separate lines: the Green Line running from St Stephen's Green to Sandyford in south County Dublin, and the Red Line, from Connolly railway station to Tallaght in the southwest of County Dublin. Trams run from approximately 0530 until 0030 daily. Tickets are available from vending machines on the platforms. You must buy your ticket before boarding the tram: ticket inspectors travel frequently and have the authority to issue stiff penalties and fines. A variety of tickets are available, and can be paid for in cash or by credit/debit card.

For more information, see www.luas.ie

DUBLIN BUS SERVICES

- Buses serve all areas of Central Dublin, and many suburbs in the Greater Dublin Area too. The main provider of services is [Dublin Bus](#), but some private operators, including [Go-Ahead Ireland](#) also run bus routes in the city.
- The best way to plan a journey by bus is by using [Transport for Ireland's journey planner](#) or the [Moovit](#) service. Both tools allow you to enter a start point and end point for your journey and will then provide you with a map of the route for your journey along with operator and departure information.
- Dublin Bus also provides a [route planner tool](#) — but it's much easier to use the [Transport for Ireland journey planner](#) or [Moovit](#) to plan your journey.
- You may also find Dublin Bus' [A to Z Finder](#), Bus Eireann's [Dublin routes information](#) and the [Go Ahead website](#) helpful in finding out more about bus routes in your area.
- Aircoach and Dublin Bus also provide bus services to Dublin Airport. Please see our [Dublin Airport bus page](#) for more information.
- You can pay for tickets on Dublin buses using either cash, or a smartcard called a **'Leap Card.'**
- Paying via 'Leap Card' is cheapest. You can [buy one online from the Leap Card website](#) or from a [variety of outlets in Dublin](#). You can top up a Leap Card with credit as necessary, and benefit from up to 31% savings on public transport in Dublin.
- If you want to pay by cash on Dublin buses, you should ideally provide the exact fare — no change is provided.
- If you are visiting Dublin for a few days you might wish to consider using a Visitor Leap Card, which allows you to travel for 1, 3 or 7 days for set prices. More information about this option is available in our ['Buying tickets'](#) section.
- On normal buses, fares range from €1.30 (for three stops, paid via a Leap Card) up to €2.60 (for travelling over 13 stops, paid via cash).
- Fares for 'Xpresso' buses (express buses) are higher, with a flat fare of €2.40 (Leap Card) or €3.00 (cash).

WHAT TO DO IN DUBLIN

THERE IS PLENTY TO KEEP ANY CHOIR GOING – CLICK ON A PICK OF SOME OF THE BEST

[GUINNESS STOREHOUSE](#) ❖ [DUBLINIA](#) ❖ [VIKING SPLASH TOURS](#) ❖ [DUBLIN CASTLE](#)
[KILMAINHAM GAOL](#) ❖ [DUBLIN ZOO](#) ❖ [CHRIST CHURCH CATHEDRAL](#) ❖ [NATIONAL MUSEUM](#)
[SAINT STEPHEN'S GREEN](#) ❖ [TEELINGS DISTILLERY](#) [PHOENIX PARK](#) ❖ [SAINT MICHAN'S CHURCH](#)
[NATIONAL GALLERY OF IRELAND](#) ❖ [NATIONAL HISTORY MUSEUM](#) ❖ [DUBLIN SIGHTSEEING TOURS](#)

GUINNESS STOREHOUSE www.guinness-storehouse.com

Ireland's number one visitor attraction - providing an unforgettable welcome and a magical journey deep into the heart of the world famous GUINNESS® brand and company. This historical building is central to Dublin's and Ireland's heritage, and has been continually updated to create a blend of fascinating industrial tradition with a contemporary edge. The seven floors bring to life the rich heritage of GUINNESS®, telling the story from its origins here at St. James's Gate in Dublin to its growth as a global brand, known all around the world.

TRINITY COLLEGE www.tcd.ie

Founded in 1592 by Queen Elizabeth. Among many famous students to attend the college were playwrights Oliver Goldsmith and Samuel Beckett. Trinity's lawns and cobbled quads provide a pleasant haven in the heart of the city. The major attractions are the Old Library and the Book of Kells, housed in the Old Library.

DUBLINIA www.dublinia.ie

The Dublinia exhibition covers the formative period of Dublin's history from the arrival of the Anglo-Normans in 1170 to the closure of the monasteries in the 1540s. There are many exhibits here which include videos, models and reconstructions. The ground floor houses a large-scale model of Dublin around 1500, a display of artefacts from Wood Quay, and reconstructions.

DUBLIN CASTLE www.dublincastle.ie

Dublin Castle off Dame Street, Dublin, Ireland, was until 1922 the seat of British rule in Ireland, and is now a major Irish government complex. See the Old Walls of Dublin, State Apartments, and the treasury.

DUBLIN ZOO www.dublinzoo.ie

Dublin Zoo opened its doors on September 1, 1831. Founded as a private society by anatomists and physicists and supported by wealthy subscribers. In 1840, featuring 46 mammals and 72 birds donated by London Zoo, the radical decision was to throw its gates open to the public for a penny on Sundays. This gesture, remarkable for that time, established the affectionate relationship that still exists between Dubliners and the 'ah-Zoo' in the Phoenix Park. Now, utterly transformed, Dublin Zoo's 28 hectares is attracting over 1 million visitors a year. Officially Ireland's biggest family attraction, not only offers a great day out for all, but also a journey of learning and discovery about the world's precious wildlife.